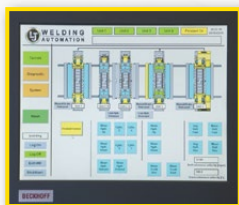


Growing Line

LJ specializes in an innovative growing line system used for fast alignment, leveling, fit up and indexing of large pipe and vessels up to 80 tons and 20 ft diameter or more. Growing lines can reduce fit up time by up to 65% when compared with traditional methods, minimize crane handling and maximize operator safety.

MINIMIZE CRANES & REDUCE FIT UP TIMES BY UP TO 65%



Easy to use HMI touchscreen to control hydraulic jacking, alignment, indexing/track drive, and powered rotation.



Cabled or wireless pendants plug and play with main control console to any operator preference.

SPECIFICATIONS

	40TA-100 Growing Line	60TA-100 Growing Line	100TA-100 Growing Line
Load Capacity:	80,000 lbs	120,000 lbs	200,000 lbs
Diameter Range:	24" - 216"	24" - 216"	66" - 240"
Minimum Workpiece Length:	72"	72"	72"
Rotation Speed:	5-50 in/min	5-50 in/min	5-100 in/min
Track Drive Speed:	12-120 in/min	12-120 in/min	12-120 in/min
Input Power:	480V, 3-ph*	480V, 3-ph*	480V, 3-ph*

* 208 - 600V, 50 or 60 Hz input power options available. Specifications subject to change; consult factory for all specifications.



Each section loaded onto rolls.



Sections brought together using powered track drive.



Alignment, leveling and high/loos easily adjustable using pendant or touch screen control.

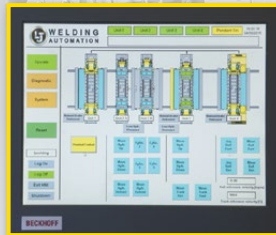


Ready for fit up and/or automated welding, then index for next section to be added.

Automation & Controls

Controls Panels

- Input power supply: 110-600 Volts and 50/60 Hz optional
- Master variable speed, direction, on/off local/remote controls
- PLC based HMI touchscreen or conventional push button controls to customer preference



FS-FR Forward/Reverse Foot Switch

- Heavy Duty Cast steel body with heavy duty guard/handle
- Momentary actuation (normally off)
- Heavy rubber 8 m (25 ft) cable with 4-pin metal plugs



HP-100 Single/Dual Axis Hand Pendants

- Ergonomic, easy to use, lightweight design, c/w protective guard
- Optional LCD digital speed readout
- Heavy rubber 8 m (25 ft) cable with 19-pin metal plugs



15 m (50 ft) Extension Cables Available!

Wireless Pendants

- For multiple-axes control or complex functions



FS-V Variable Speed Foot Switch

- Plug & Play with optional controller upgrade
- Main panel controls master speed range, foot switch used for variable speed in master range



Automation Capabilities

LJ utilizes user-friendly touch screen controls for plug and play integration of multiple machines to create fully integrated welding and material handling systems.



Fully integrated automated welding systems.

Robotic or fixed welding automation.

User friendly HMI Control

Material handling systems.

